

SAND CONTROL PRODUCTS

Punched Screen

Description

Punched Screen is a slip on style jacket which is slid over the perforated base pipe and secured at each end via welds. Punched screen is unique in that inflow occurs into the liner in an axial vs a radial path at a 90 degree angle to the screen O.D.

304L or 316L are the most common metal types utilized but alternates can be provided.

Screens are available with multiple slot geometries and densities with open flow area ranging from 1.5%-8%.

Screens are typically provided in lengths ranging from 3m-9m but are available in any length or combination of lengths to fit pipe configuration desired.

Available screen gauges are 0.006" (150 Micron) - 0.040" (1016 Micron)

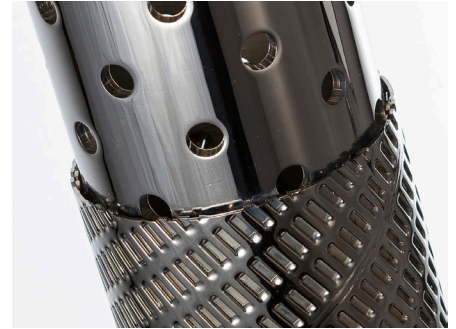
Punched Screen is a cost effective liner technology which has proven to optimize SAGD operations in uniform reservoirs by ensuring low draw downs for the lifetime of the well.

Features and Benefits

- Multiple slot geometries available
- 304L/316L Stainless Steel
- High Open Flow Area 1.5%-8% based on screen gauge and punch geometry

Applications

- Thermal SAGD/CSS horizontal open hole in uniform reservoirs



SAND CONTROL PRODUCTS

Punched Screen

Technical Data

Base Pipe		Holes Per foot	Holes Per meter	Hole Size inches	Hole Open Area sq.in./ft	Screen		NU Coupling		EU Coupling	
Outer Diameter						Outer Diameter		Outer Diameter			
inches	mm					inches	mm	inches	mm	inches	mm
1.900	48.26	84	275.6	3/8	9.3	2.17	55.0	2.200	55.88	2.500	63.50
2.375	60.33	96	315.0	3/8	10.6	2.70	68.5	2.875	73.03	3.063	77.80
2.875	73.03	60	196.9	1/2	11.8	3.27	83.0	3.500	88.90	3.668	93.17
3.500	88.90	72	236.2	1/2	14.1	3.90	99.0	4.250	107.95	4.500	114.30
4.000	101.60	84	275.6	1/2	16.5	4.35	110.5	4.750	120.65	5.000	127.00
4.500	114.30	84	275.6	1/2	16.5	4.92	125.0	5.200	132.08	5.563	141.30

Base Pipe		Holes Per foot	Holes Per meter	Hole Size inches	Hole Open Area sq.in./ft	Screen		Coupling	
Outer Diameter						Outer Diameter		Outer Diameter	
inches	mm					inches	mm	inches	mm
4.500	114.30	84	275.6	1/2	16.5	4.92	125.0	5.000	127.00
5.000	127.00	96	315.0	1/2	18.9	5.39	137.0	5.563	141.30
5.500	139.70	96	315.0	1/2	18.9	5.91	150.0	6.050	153.67
6.625	168.28	120	393.7	1/2	23.6	7.01	178.0	7.390	187.71
7.000	177.80	132	433.1	1/2	25.9	7.40	188.0	7.656	194.46
7.625	193.68	144	472.5	1/2	28.3	8.07	205.0	8.500	215.90
8.625	219.08	156	511.8	1/2	30.6	9.06	230.0	9.625	244.48